



EUROPEAN YACHTING NETWORK

## Hagenaar 2050 (1904)

Property: 16.010.956



EYN Price: € 0

Length: 20,50 m; Width: 4,00 m; Draft: 0,90 m; Headroom: 1,90 m; Engine brand: DAF 6 cil.; Total engine power: 115 hp; Engine hours: Unknown; Number of engines: 1 ;

MOORING 49.000,= see document, very nice in perfect condition.



EUROPEAN YACHTING NETWORK

### The yacht

<b>Brand</b>	Hagenaar
<b>Type</b>	2050
<b>Boat type</b>	Ex-Professional
<b>Name of the boat</b>	Disponibel
<b>BTW/VAT</b>	Paid
<b>Year of construction</b>	1904
<b>Berth</b>	Noord-Brabant - Nederland

### Sizes & Weights

<b>Length</b>	20,50 m
<b>Width</b>	4,00 m
<b>Draft</b>	0,90 m
<b>Clearance</b>	2,90 m
<b>Displacement</b>	43.000 kg
<b>Headroom</b>	1,90 m
<b>Drinking water</b>	3.000 l
<b>Black water</b>	2.000 l

### The engine

<b>Engine brand</b>	DAF 6 cil.
<b>Total engine power</b>	115 hp
<b>Last service</b>	01-05-2017
<b>Fuel tank capacity</b>	1.500 l



EUROPEAN YACHTING NETWORK

#### \* POSSIBILITIES

<b>Status</b>	Reduced in price!
<b>Berth</b>	Transmissible 49.000,= zie document
<b>Suitable for habitation</b>	Yes

#### DECK EQUIPMENT

<b>Anchor</b>	Manual
<b>Options present</b>	Rail Spray hood Sailing lights Dining table

#### ELECTRONICS

<b>Voltage circuit</b>	12V+ 110V + 220V
<b>Heating</b>	Kabola
<b>Options present</b>	Washing machine Droogmachine Battery charger Shore power

#### ENGINE ROOM

<b>Starting batteries</b>	2
<b>Number of engines</b>	1
<b>Fuel</b>	Diesel
<b>Generator</b>	Mastervolt 15 kVa
<b>Light batteries</b>	10 new
<b>Options present</b>	220V socket Water pressure system

#### ENTERTAINMENT

<b>Options present</b>	TV
------------------------	----

#### GALLEY

<b>Cooking ring</b>	Keramisch 4 pits
<b>Options present</b>	Oven



**EUROPEAN YACHTING NETWORK**

Microwave  
Geyser  
Freezer  
Air evacuation system  
Fridge

**INTERIOR LAYOUT**

<b>Berths</b>	4
<b>Bedrooms</b>	2
<b>Window frames</b>	Aluminium double glazing
<b>Bathroom</b>	1

**MATERIALS INTERIOR**

<b>Floor covering</b>	Hout
-----------------------	------

**NAVIGATION**

<b>Bow thruster</b>	Electric
<b>Options present</b>	Mariphone

**SAFETY**

<b>Options present</b>	Sprinkler system
------------------------	------------------

**TECHNICAL DETAILS**

<b>Type of engine</b>	Inboard
<b>Technical condition below the waterline</b>	Good condition
<b>Propulsion</b>	Fixed propeller shaft
<b>Material (hull)</b>	Steel
<b>Steering equipment</b>	Mechanical
<b>Material structure</b>	Steel
<b>Technical condition hull</b>	Good condition
<b>Technical condition deck</b>	Good condition
<b>Condition structure</b>	Good condition



EUROPEAN YACHTING NETWORK

**WET ROOM**

<b>Toilet</b>	1
<b>Shower</b>	1
<b>Bathrooms</b>	1



EUROPEAN YACHTING NETWORK





EUROPEAN YACHTING NETWORK





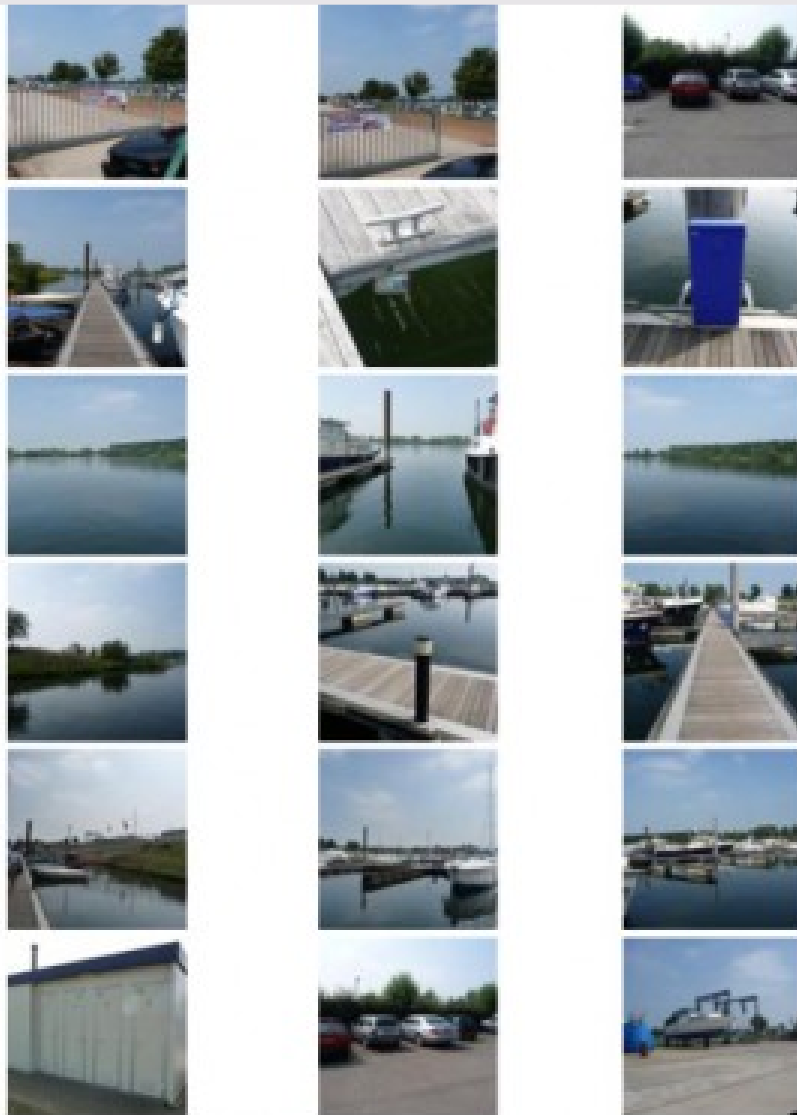
EUROPEAN YACHTING NETWORK







## EUROPEAN YACHTING NETWORK



kadastraal geregistreerd 26 x 6 m

16 amp. electro met eigen meter

water op steiger

elctrische poort

ligplaats aan buitensteiger dus schitterend uitzicht

twee parkeerplaatsen in eigendom

nieuwe steigers met verlichting

verder grote kantine met buitenzwembad zonneweide strand snackbar restaurant  
en geweldige ligging in mooi gebied.