



EUROPEAN YACHTING NETWORK

## One Off St Jozefvlet 1000 (1996)

Property: 64.803.2544



EYN Price: **€ 92.000**

Length: 10,00 m; Width: 3,40 m; Draft: 0,80 m; Headroom: 1,90 m; Engine brand: Mitsubishi ; Total engine power: 50 hp; Engine hours: 803 hour; Number of engines: 1 ; - : Owner ; Trade: Not possible ; Rent (to buy): Not possible ; Private Financing: Possible ;



EUROPEAN YACHTING NETWORK

### The yacht

<b>Brand</b>	One Off
<b>Type</b>	St Jozefvlet 1000
<b>Boat type</b>	Motor boat
<b>BTW/VAT</b>	Paid
<b>Year of construction</b>	1996
<b>Berth</b>	Limburg - Nederland
<b>Shipyard</b>	Klappe Jachtbouw Kampen

### Sizes & Weights

<b>Length</b>	10,00 m
<b>Width</b>	3,40 m
<b>Draft</b>	0,80 m
<b>Clearance</b>	2,50 m
<b>Displacement</b>	6.800 kg
<b>Headroom</b>	1,90 m
<b>Drinking water</b>	250 l

### The engine

<b>Engine brand</b>	Mitsubishi
<b>Total engine power</b>	50 hp
<b>Engine hours</b>	803 hour
<b>Last service</b>	-
<b>Fueltank capacity</b>	500 l



EUROPEAN YACHTING NETWORK

**\* POSSIBILITIES**

<b>Private Financing</b>	Possible
<b>Berth</b>	Not transferable
<b>Trade</b>	Not possible
<b>Suitable for habitation</b>	No
<b>Rent (to buy)</b>	Not possible

**DECK EQUIPMENT**

<b>Material deck</b>	Steel
<b>Anchor</b>	Manual
<b>Options present</b>	Swimming ladder Rail Bimini top Spray hood Sailing lights

**ELECTRONICS**

<b>Voltage circuit</b>	12V + 220V
<b>Heating</b>	Webasto
<b>Options present</b>	Solar panels Battery charger Shore power

**ENGINE ROOM**

<b>Number of engines</b>	1
<b>Fuel</b>	Diesel
<b>Options present</b>	220V socket Bilge-pump Converter Boiler

**ENTERTAINMENT**

<b>Options present</b>	Sound system
------------------------	--------------

**GALLEY**



## EUROPEAN YACHTING NETWORK

<b>Cooking ring</b>	3-burners gas
<b>Options present</b>	Oven
	Sink
	Fridge

### INTERIOR LAYOUT

<b>Berths</b>	4
<b>Bedrooms</b>	2
<b>Window frames</b>	Aluminium
<b>Options present</b>	Dinette

### MATERIALS INTERIOR

-	Owner
<b>Woodwork</b>	Cherry
<b>Options present</b>	Curtains

### NAVIGATION

<b>Bow thruster</b>	Electric
<b>Options present</b>	Mariphone
	Depth gauge

### OTHER

<b>Options present</b>	Covers, summer
------------------------	----------------

### SAFETY

<b>Options present</b>	Life jackets
	Fire extinguisher(s)

### TECHNICAL DETAILS

<b>Type of engine</b>	Inboard
<b>Technical condition below the waterline</b>	Good condition
<b>Material (hull)</b>	Steel
<b>Anti fouling</b>	Done 2015



EUROPEAN YACHTING NETWORK

<b>Steering equipment</b>	Hydraulic
<b>Material structure</b>	Steel
<b>Technical condition hull</b>	Good condition
<b>Technical condition deck</b>	Good condition
<b>Condition structure</b>	Good condition

#### WET ROOM

<b>Toilet</b>	1
<b>Shower</b>	1
<b>Bathrooms</b>	1

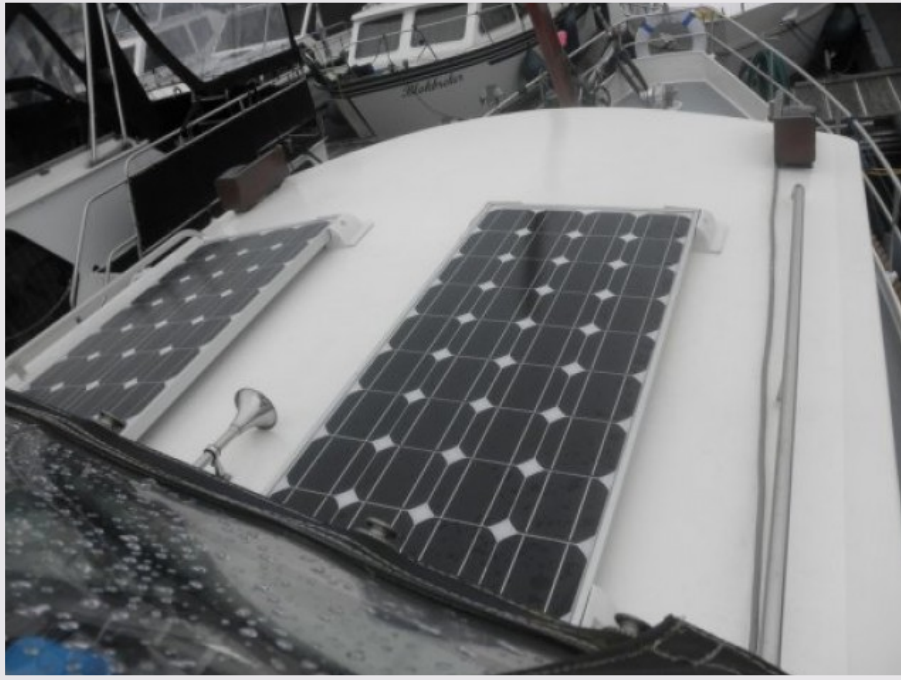


EUROPEAN YACHTING NETWORK





EUROPEAN YACHTING NETWORK





EUROPEAN YACHTING NETWORK

