



EUROPEAN YACHTING NETWORK

Vlet Directie (1977)

Property: 16.404.1879



EYN Price: **€ 65.000**

Length: 12,00 m; Width: 3,85 m; Draft: 1,25 m; Headroom: 1,90 m; Engine brand: Ford ; Total engine power: 125 hp; Engine hours: 2.600 hour; Number of engines: 1 ; -: Ship carpenter ;

well maintained ship



EUROPEAN YACHTING NETWORK

The yacht

Brand	Vlet
Type	Directie
Boat type	Motor boat
Name of the boat	Mira
BTW/VAT	Paid
Year of construction	1977
Berth	Gelderland - Nederland

Sizes & Weights

Length	12,00 m
Width	3,85 m
Draft	1,25 m
Clearance	2,60 m
Headroom	1,90 m
Drinking water	1.000 l
Maximum speed	20 kn

The engine

Engine brand	Ford
Total engine power	125 hp
Engine hours	2.600 hour
Last service	05-03-2014
Fueltank capacity	1.000 l



EUROPEAN YACHTING NETWORK

DECK EQUIPMENT

Material deck	Steel, with anti-glide coating
Anchor	Electrical
Options present	Swimming platform Rail Cockpitcover Bow iguana Anchor winch Sailing lights Davits Dining table

ELECTRONICS

Voltage circuit	24V
Heating	Central heating
Options present	Battery charger Alarm system Shore power

ENGINE ROOM

Starting batteries	2
Exhaust	Dry
Number of engines	1
Fuel	Diesel
Light batteries	2
Options present	220V socket Converter Water pressure system pump Ventilation

ENTERTAINMENT

Options present	Sound system TV
------------------------	--------------------

GALLEY



EUROPEAN YACHTING NETWORK

Cooking ring	3-burners
Options present	Geyser
	Sink
	Freezer
	Fridge

INTERIOR LAYOUT

Berths	4
Bedrooms	1
Window frames	Aluminium
Options present	Aft cabin
	Dinette

MATERIALS INTERIOR

Ceiling	Wood
-	Ship carpenter
Floor covering	eiken
Woodwork	Oak
Seats	Fabric

NAVIGATION

Bow thruster	Hydraulic
Communication	dsc marifoon
Options present	Radar
	Mariphone
	Compass
	Depth gauge
	GPS
	Remote operation
	Claxon

SAFETY

Options present	Life jackets
------------------------	--------------

TECHNICAL DETAILS



EUROPEAN YACHTING NETWORK

Type of engine	Inboard
Technical condition below the waterline	Good condition
Propulsion	Fixed propeller shaft
Propeller(s)	3 Blades
Material (hull)	Steel
Anti fouling	Done
Throttles	Cabling
Type of boat	Motor Yacht
Steering equipment	Hydraulic
Material structure	Steel
Technical condition hull	Good condition
Technical condition deck	Good condition
Condition structure	Good condition

WET ROOM

Toilet	1
---------------	---



EUROPEAN YACHTING NETWORK





EUROPEAN YACHTING NETWORK



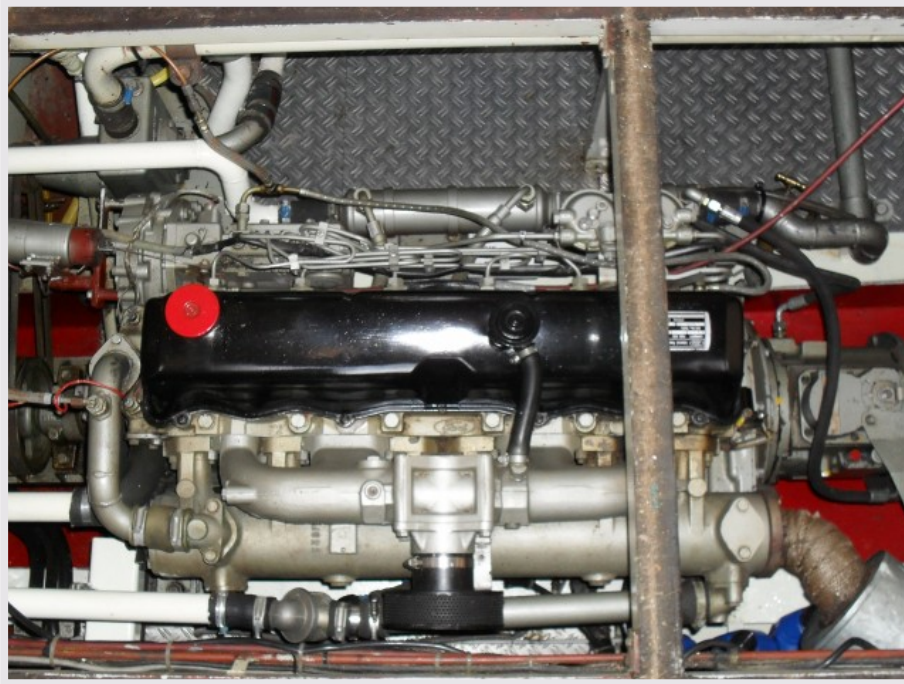


EUROPEAN YACHTING NETWORK





EUROPEAN YACHTING NETWORK





EUROPEAN YACHTING NETWORK

